



# TG201 SPECIFICATION

TG201/400/750/YY/4E/COB/BK

Our new products have high efficiency, uniform and consistent color, a longer design, a variety of installation methods to meet the needs of different places, beautiful at the same time, transparent; permissible operating ambient temperature: in outdoor areas: -40..+50°C

## Product data

### General Information

|                               |                  |
|-------------------------------|------------------|
| Light source replaceable      | No               |
| Number of gear units          | -                |
| Driver/power unit/transformer | Driver           |
| Driver included               | Yes              |
| Optic type                    | Symmetric        |
| Optical cover/lens type       | Lens             |
| Luminaire light beam spread   | 45/60/90 Optical |
| Sensor socket                 | -                |
| Cable length                  | -                |
| Protection class IEC          | Safety class I   |
| Certifications                | CE               |
| Lifetime (hour)               | 50,000h          |
| EU RoHS compliant             | Yes              |
| Light source engine type      | LED              |

## Operating and Electrical

|                 |            |
|-----------------|------------|
| Input power     | 400W       |
| Input voltage   | 100-277Vac |
| Input frequency | 50/60Hz    |
| Current         | 4.0A max   |
| THD             | <20%       |
| Power factor    | 0.95       |

## Mechanical and Housing

|                             |               |
|-----------------------------|---------------|
| Housing material            | Aluminum      |
| Reflector material          | -             |
| Optical cover/lens material | Glass         |
| Optical cover/lens finish   | Clear         |
| Product dimensions (mm)     | 373*410*200mm |
| Product dimensions (inch)   | -             |
| Product color               | Black         |

## Approval and Application

|                             |      |
|-----------------------------|------|
| Ingress protection code     | IP67 |
| Mech.impact protection code | -    |

## Initial Performance (IEC Compliant)

|                                |         |
|--------------------------------|---------|
| Initial luminous flux          | 56000Lm |
| Luminous flux tolerance        | +/-10%  |
| Initial LED luminaire efficacy | 140Lm/W |
| Init.Corr.Color Temperature    | 5000K   |
| Init.Color Rendering Index     | >70     |
| SCDM                           | ≤5      |

## Application Conditions

|                           |              |
|---------------------------|--------------|
| Ambient temperature range | -40 to +50°C |
| Dimming                   | -            |

## Logistical Data

|                             |                            |
|-----------------------------|----------------------------|
| Order product name          | TG201/400/750/YY/4E/COB/BK |
| Net weight (piece)          | 9.70kg                     |
| Gross weight (piece)        | 10.20kg                    |
| Packaging dimensions (mm)   | -                          |
| Packaging dimensions (inch) | -                          |
| Packaging unit (piece)      | Folding carton box 1       |
| Volumen (m³)                | -                          |
| Volumen (ft³)               | -                          |

## Application

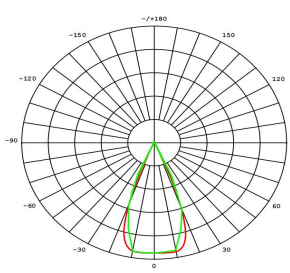
☉ Area Lighting

☉ Architecture Lighting

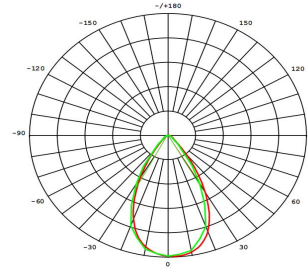
☉ Stadium Lighting

☉ Light Tower

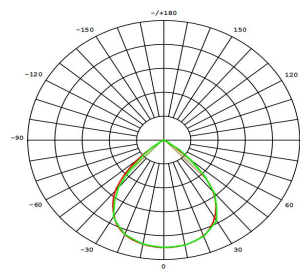
## Light Distribution



45° Optical

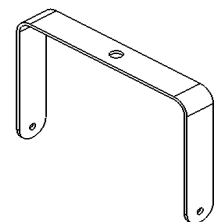
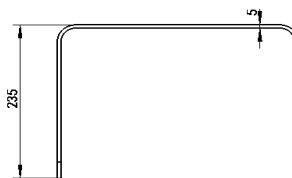
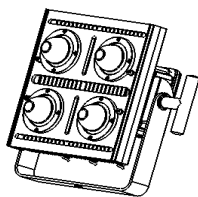
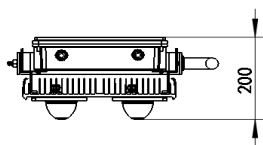
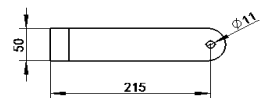
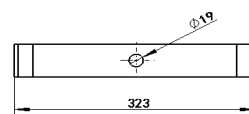
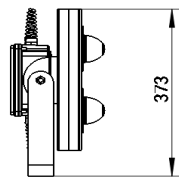
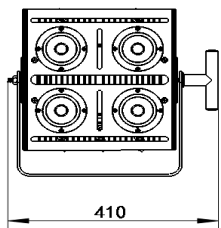


60° Optical



90° Optical



## Dimensional drawing



Physical dimension (mm)

mounting bracket size (mm)

## Accessories

| Material   | Description  |
|--|--|
|  Lock the handle  | Lock bolt is used for securing a adjustable part of the lighting fixture in a desired position |
|  Mounting bracket | Multiple mounting brackets are available   |

Plusrite does not give any representation or warranty as to the accuracy or completeness of the information included herein and shall not be liable for any action in reliance thereon. The information presented in this document is not intended as any commercial offer and does not form part of any quotation or contract, unless otherwise agreed by Plusrite. Plusrite is registered.

[www.plusrite.com](http://www.plusrite.com)