



SD801 SPECIFICATION

Our new products have high efficiency, uniform and consistent color, a longer design, a variety of installation methods to meet the needs of different places, beautiful at the same time, transparent; permissible operating ambient temperature: in outdoor areas: -40 to +45°C

Product data

General Information

Wattage	30/60/120/180
Number of module units	1/2/3.
Driver/power unit/transformer	Driver
Driver included	Yes
Optic type	Symmetric
Optical cover/lens type	Lens
Luminaire light beam spread	60°/90°/90°/120° Optical
Sensor socket	-
Cable length	Customizable
Protection class IEC	Safety class I
Certifications	CE/CQC
Lifetime (hour)	50,000h
EU RoHS compliant	Yes
Light source engine type	LED

Product data	30W	60W	120W	180W
Number of mouldle units	1	1	2	3
Input voltage	100-277Vac	100-277Vac	100-277Vac	100-277Vac
Input frequency	50/60Hz	50/60Hz	50/60Hz	50/60Hz
Current	0.3A max	0.6A max	1.2A max	1.8A max
THD	<20%	<20%	<20%	<20%
Power factor	0.95	0.95	0.95	0.95
Housing material	Aluminum	Aluminum	Aluminum	Aluminum
Optical cover/lens material	Polycarbonate	Polycarbonate	Polycarbonate	Polycarbonate
Optical cover/lens finish	Clear	Clear	Clear	Clear
Product dimensions (mm)	267*102*103mm	321*131*106mm	Horizontal: 603*131*106mm Vertical: 324*263*106mm	Horizontal: 885*131*106mm Vertical: 321*395*106mm
Product color	Customizable	Customizable	Customizable	Customizable
Ingress protection code	IP66	IP66	IP66	IP66
Impact Resistance	IK08	IK08	IK08	IK08
Initial luminous flux	3900lm (4000K)	7200lm (4000K)	14400lm (4000K)	21600lm (4000K)
Luminous flux tolerance	+/-10%	+/-10%	+/-10%	+/-10%
Initial LED luminaire efficacy	130Lm/W(4000K)	120Lm/W(4000K)	120Lm/W(4000K)	120Lm/W(4000K)
Init.Corr.Color Temperature	3000/4000/5000K	3000/4000/5000K	3000/4000/5000K	3000/4000/5000K
Init.Color Rendering Index	>70	>70	>70	>70
SCDM	≤5	≤5	≤5	≤5
Ambient temperature range	-40 to +45℃	-40 to +45℃	-40 to +45℃	-40 to +45℃
Dimming	0~10V, PWM, DALI	0~10V, PWM, DALI	0~10V, PWM, DALI	0~10V, PWM, DALI
Adjustable CCT	3000~5700K	3000~5700K	3000~5700K	3000~5700K
Intelligent control mode	RS485	RS485	RS485	RS485
Net weight (piece)	1.5kg	2kg	3.6kg	5.5kg

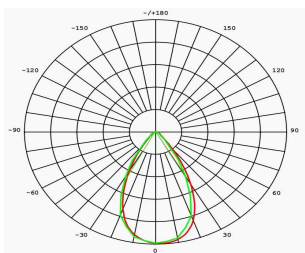
Application

☉ Tunnel Lighting

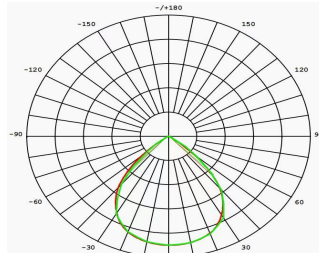
☉ Area Lighting

☉ Building Lighting

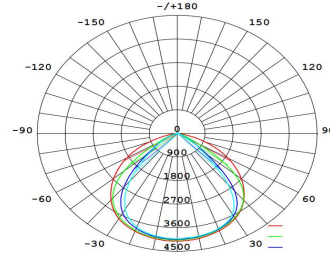
Light Distribution



60° Optical

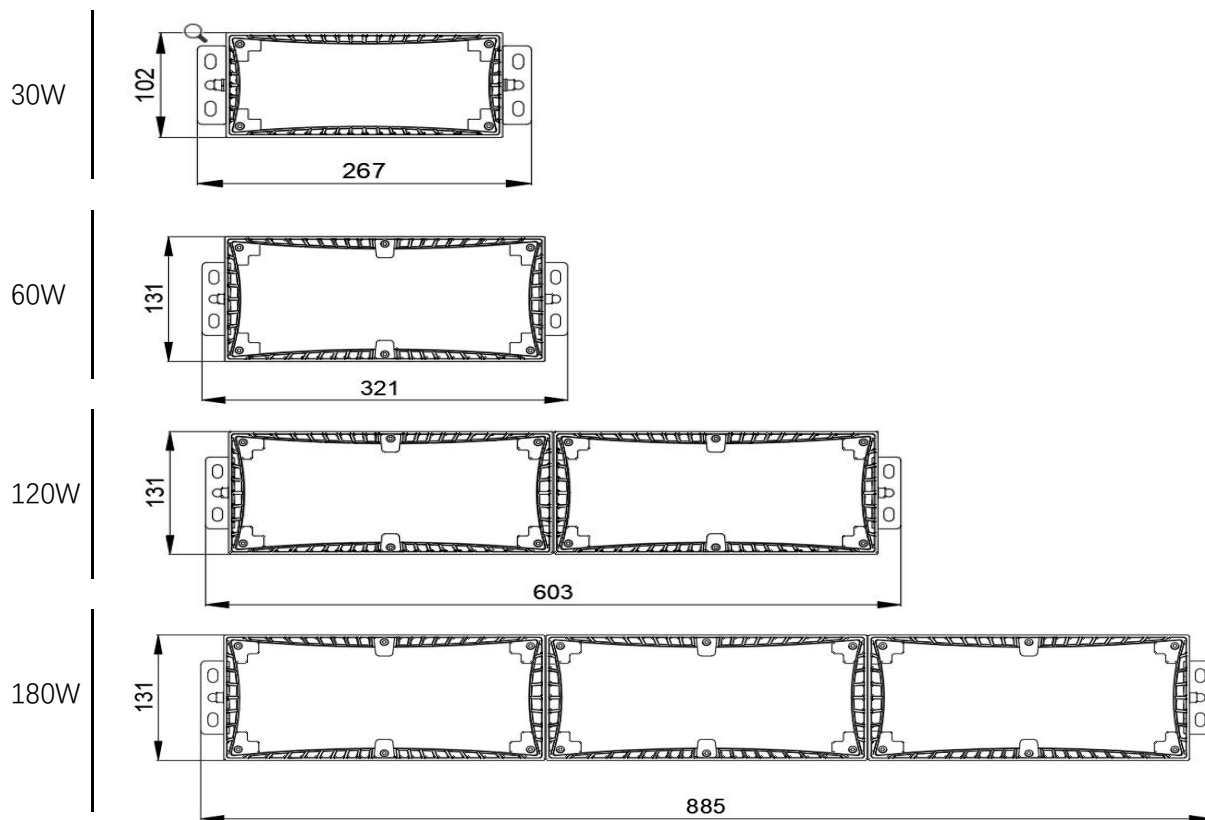


90° Optical

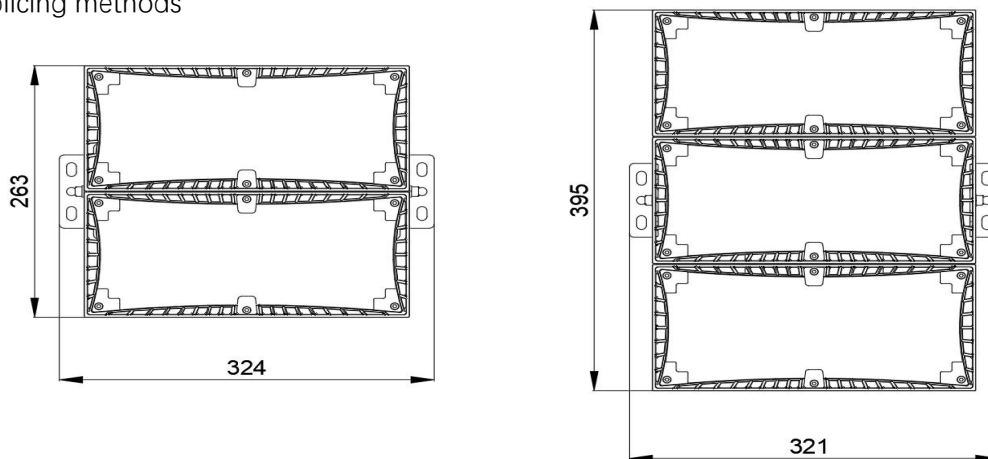


90°*120° Optical

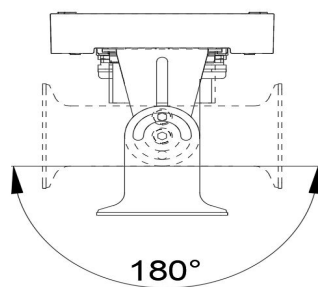
Dimensional drawing



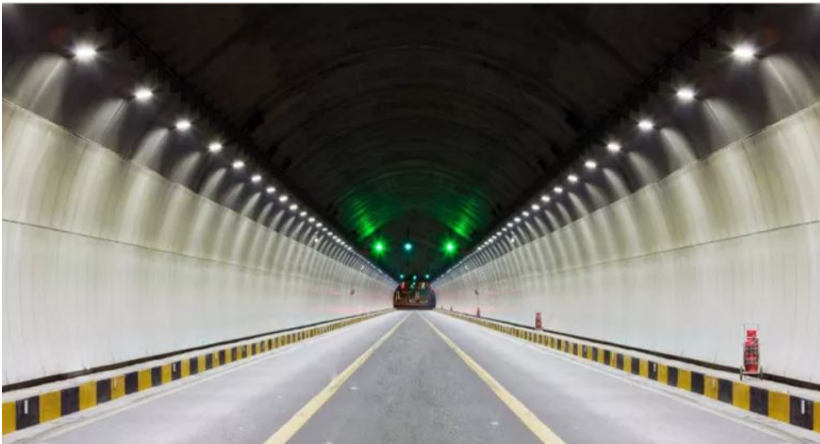
Other splicing methods



Adjust The Angle



Effect Picture



Plusrite does not give any representation or warranty as to the accuracy or completeness of the information included herein and shall not be liable for any action in reliance thereon. The information presented in this document is not intended as any commercial offer and does not form part of any quotation or contract, unless otherwise agreed by Plusrite. Plusrite is registered.

www.plusrite.com